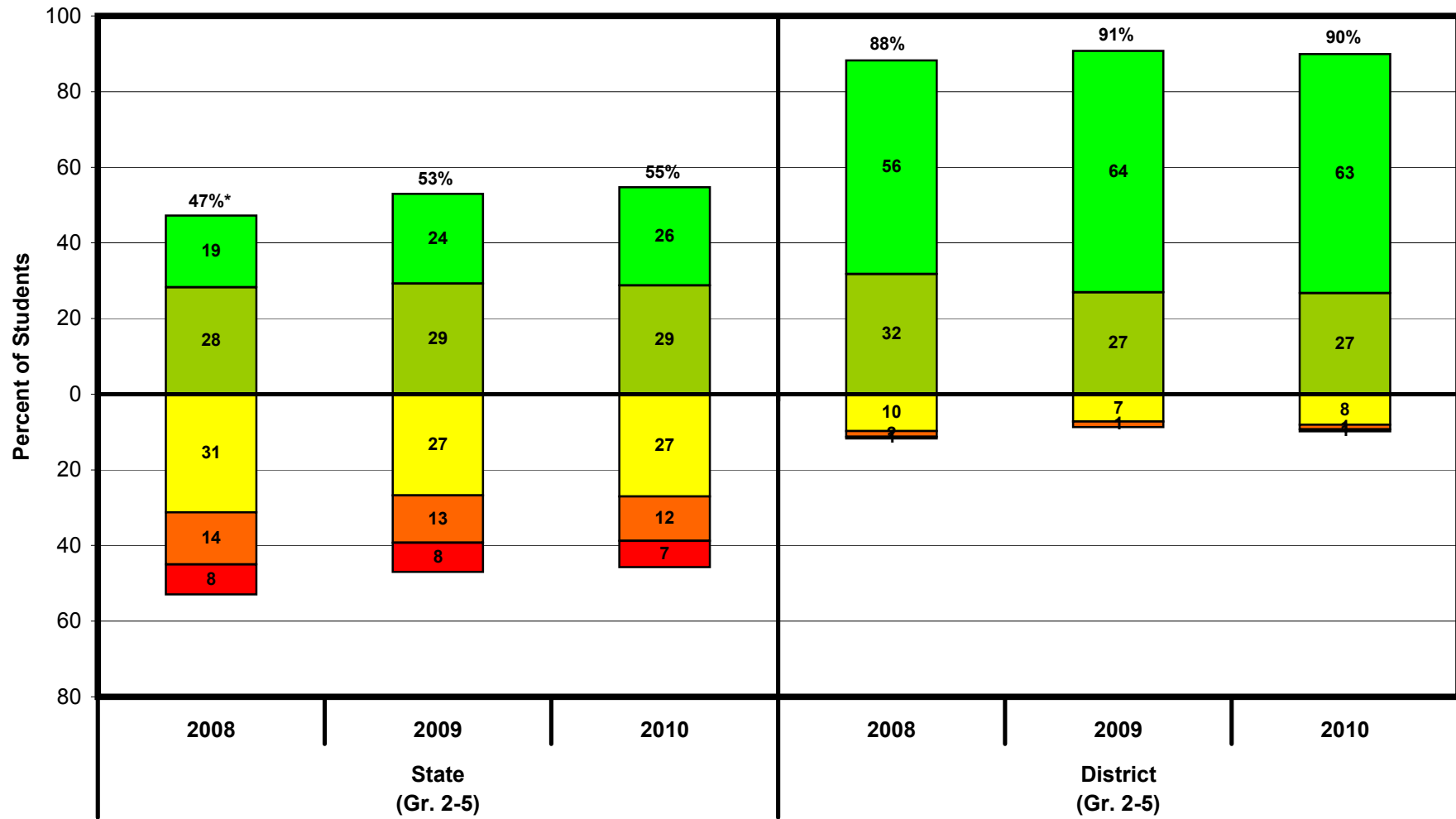


Manhattan Beach Unified

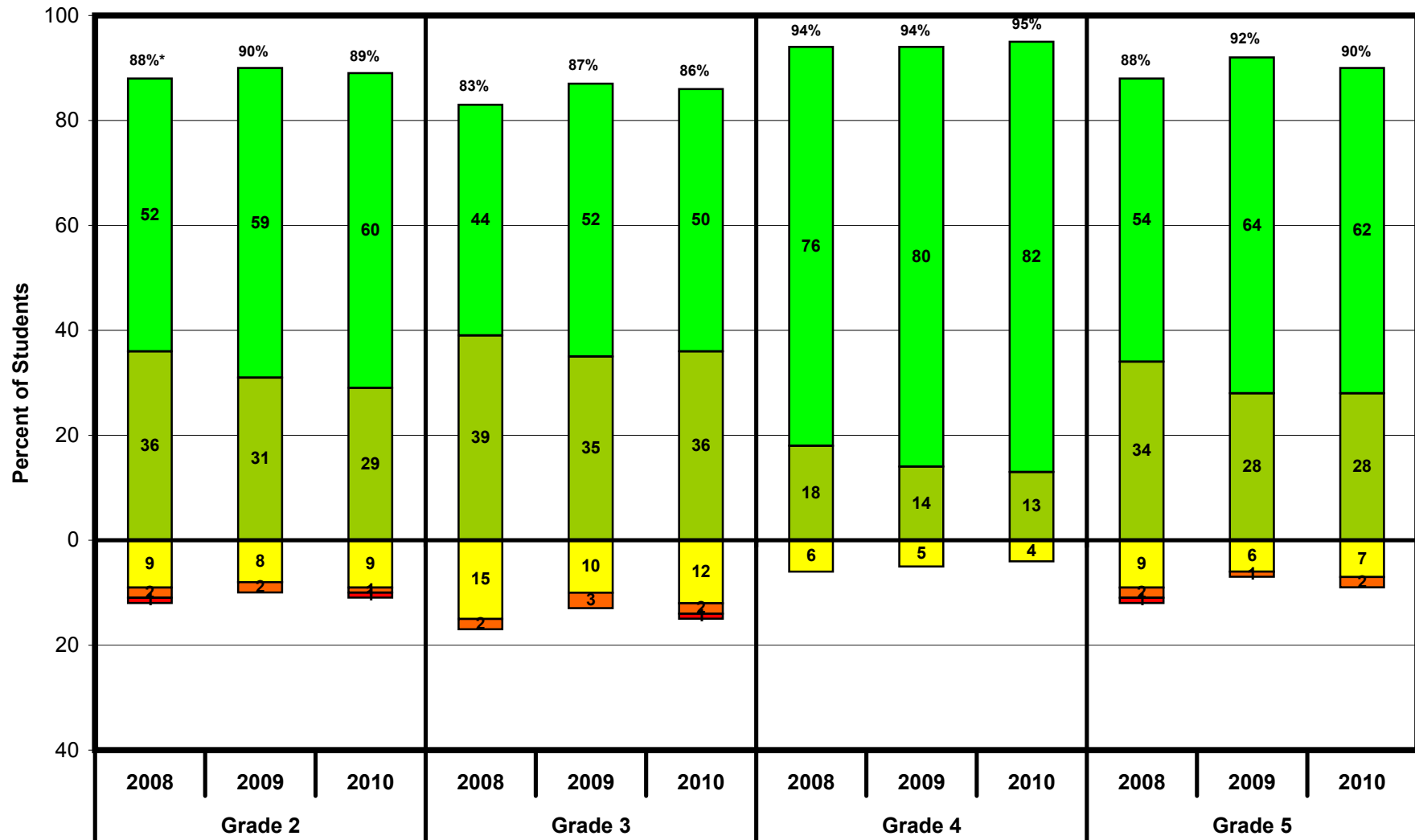
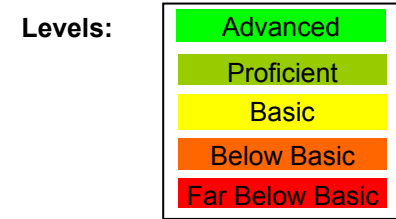
CST - English/Language Arts
 All Students - By State and District
 Percent by Proficiency Levels
 2008-2010



*Percent Proficient or Advanced.

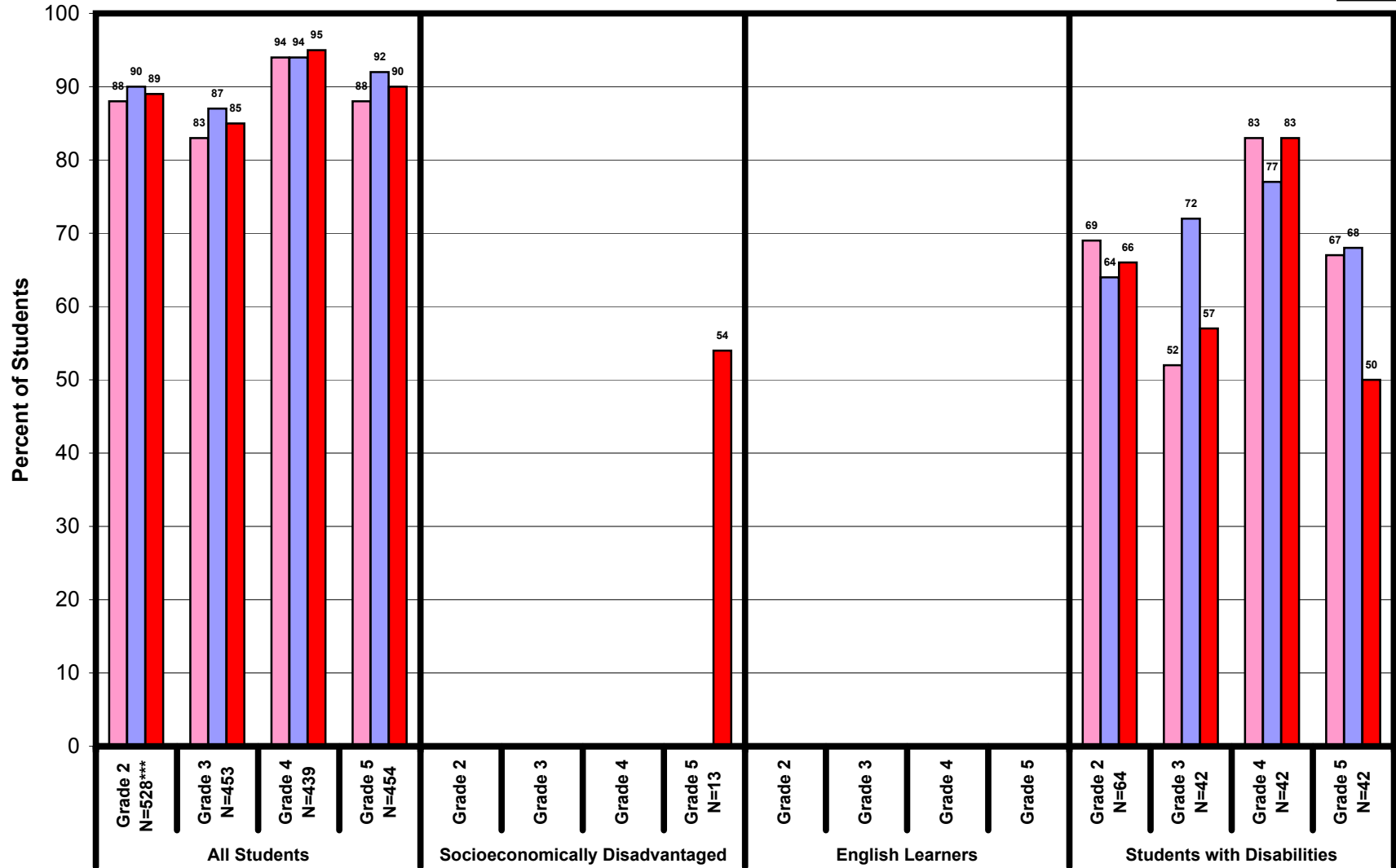
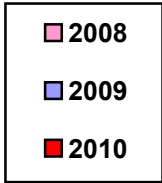
Manhattan Beach Unified

CST - English/Language Arts
 All Students - By Grade
 Percent by Proficiency Levels
 2008-2010



*Percent Proficient or Advanced.

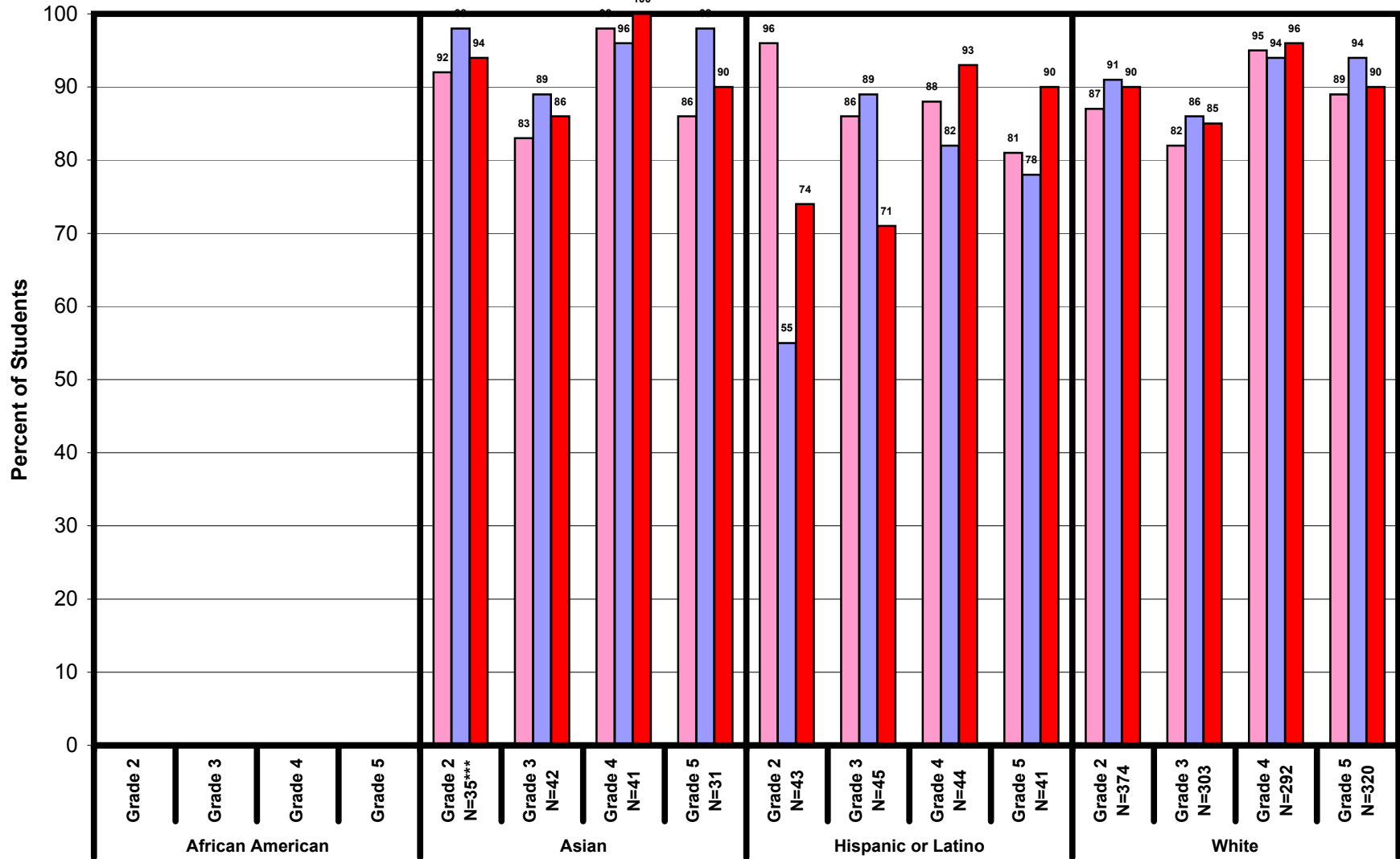
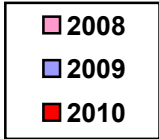
CST - English/Language Arts
 Subgroups* - By Special Needs and Grade
 Percent Proficient and Advanced Levels**
 2008-2010



*Subgroups less than 11 are not reported.
 **Basic or lower proficiency levels not available.
 ***N=2010 Number tested

Manhattan Beach Unified

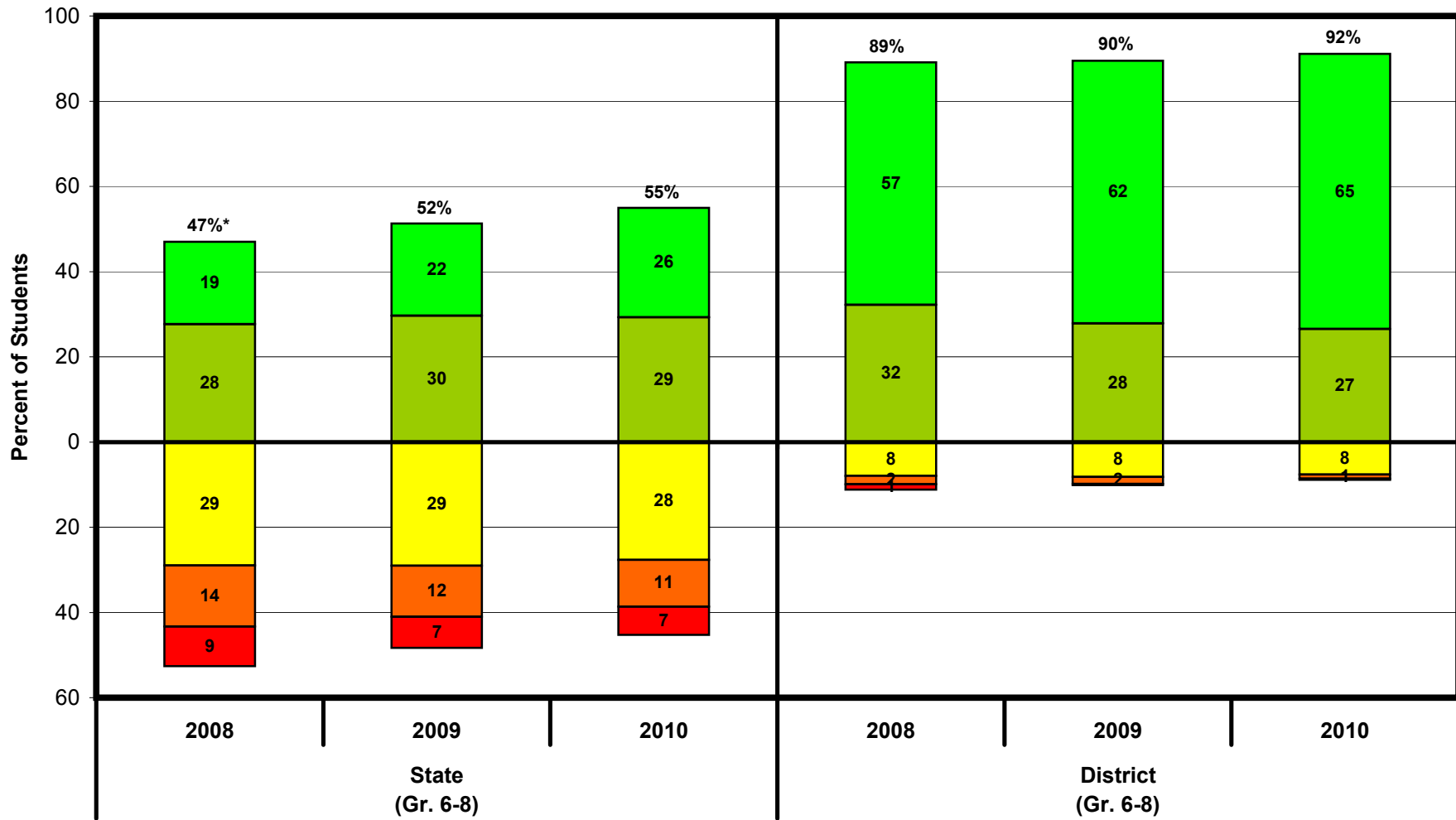
CST - English/Language Arts
 Subgroups* - By Ethnicity and Grade
 Percent Proficient and Advanced Levels**
 2008-2010



*Subgroups less than 11 are not reported
 **Basic or lower proficiency levels not available
 ***N=2010 Number tested

Manhattan Beach Unified

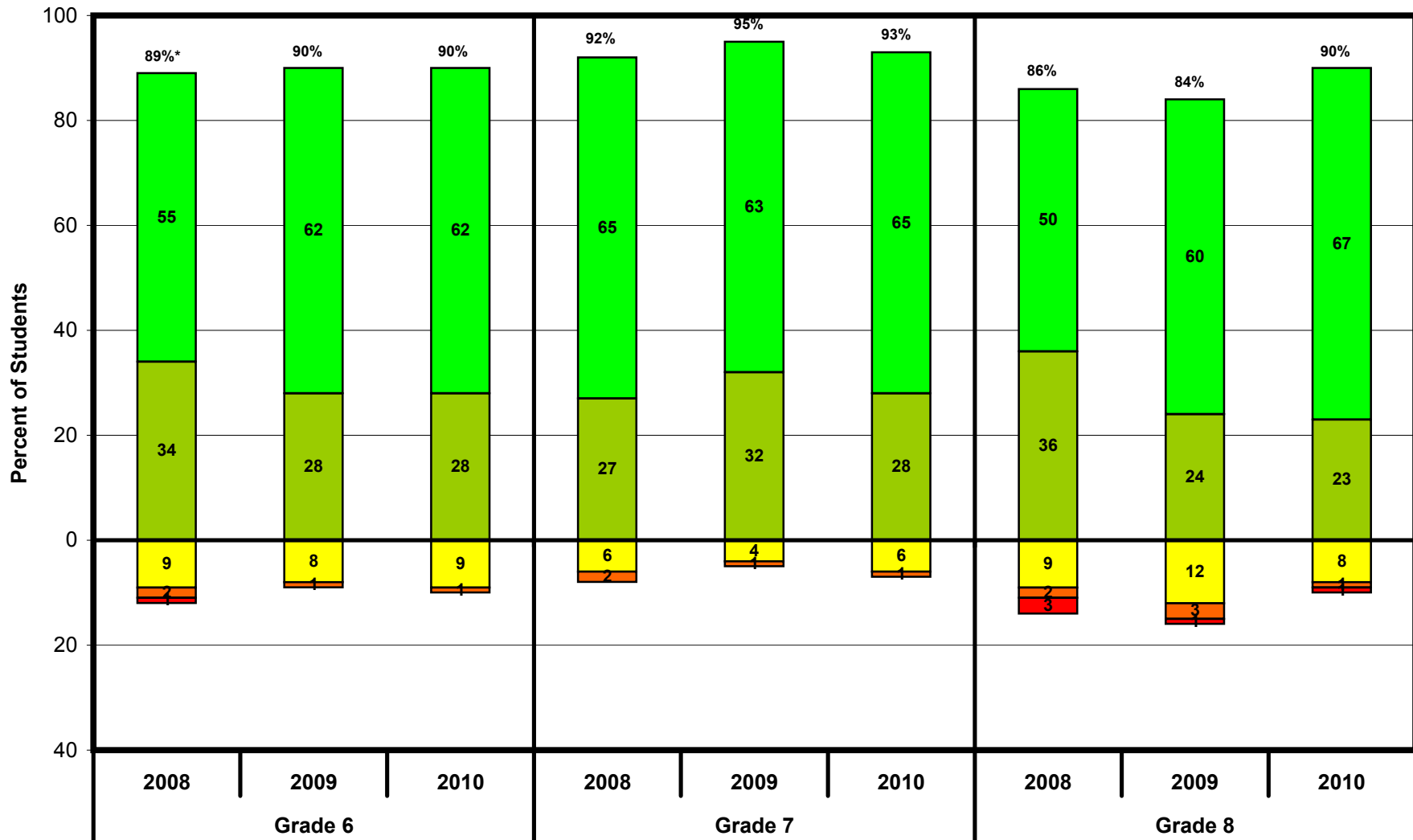
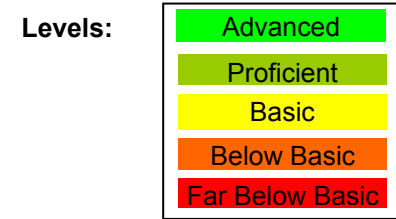
CST - English/Language Arts
 All Students - By State and District
 Percent by Proficiency Levels
 2008-2010



*Percent Proficient or Advanced.

Manhattan Beach Unified

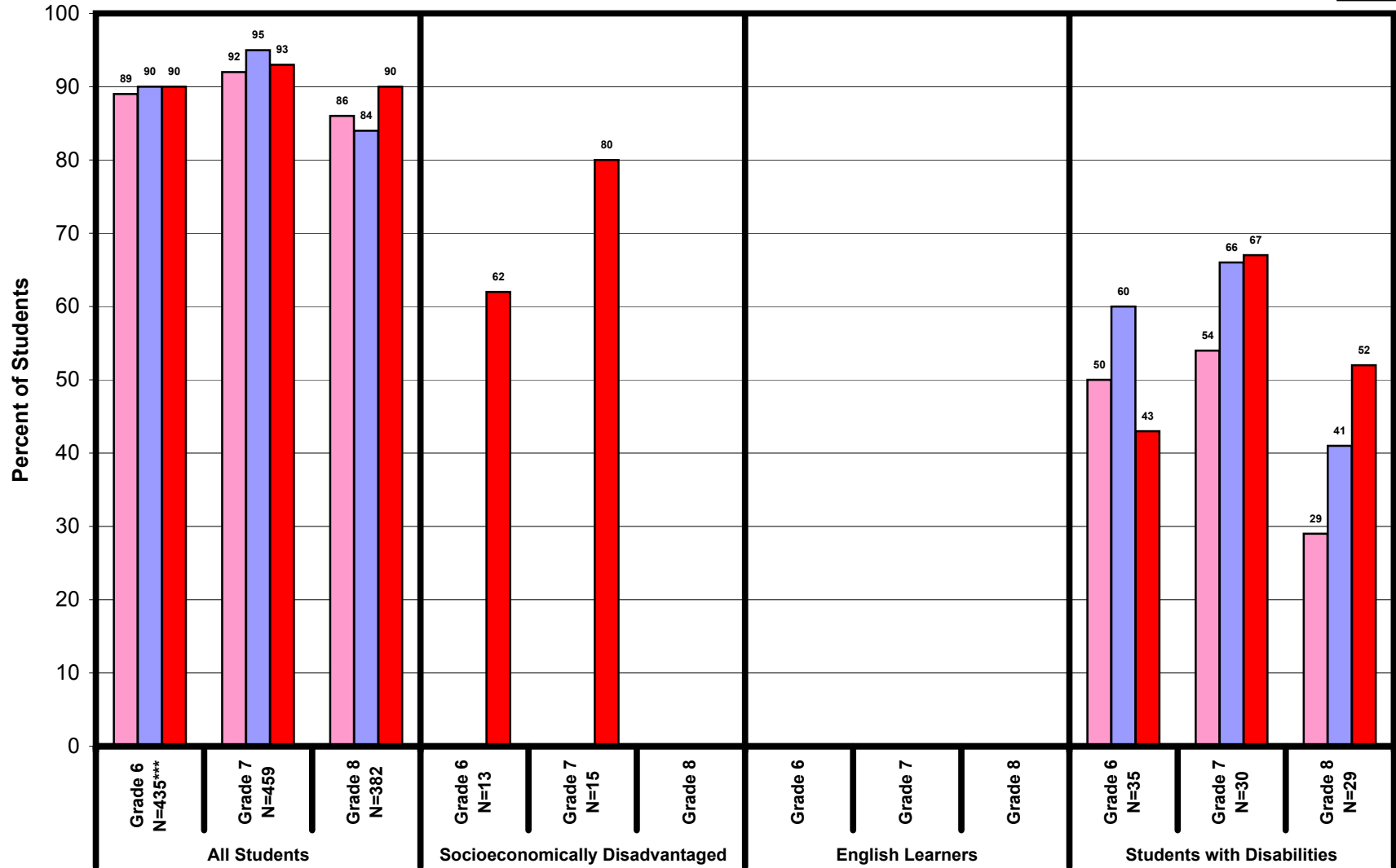
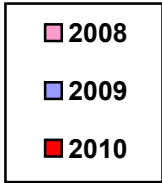
CST - English/Language Arts
All Students - By Grade
Percent by Proficiency Levels
2008-2010



*Percent Proficient or Advanced.

Manhattan Beach Unified

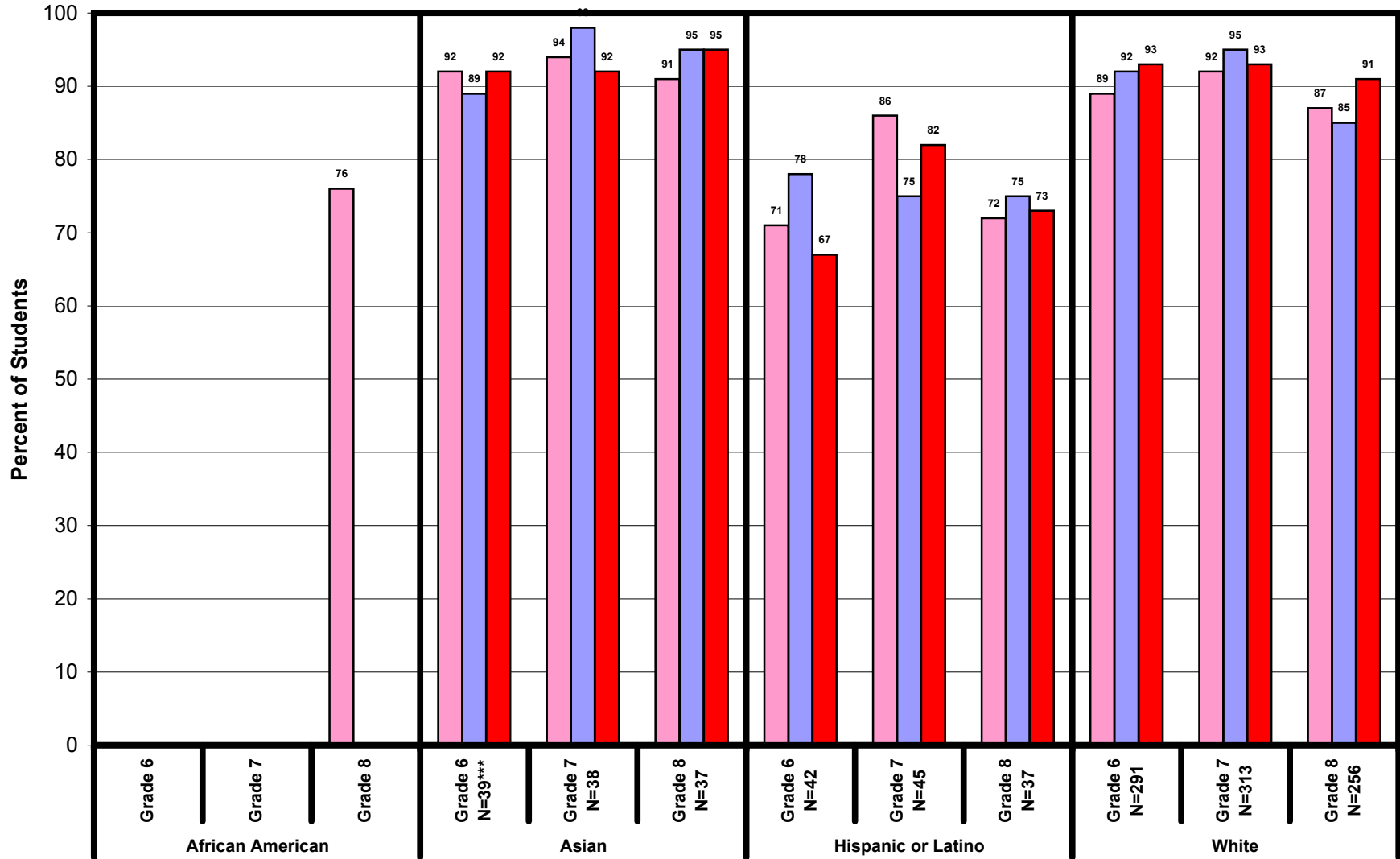
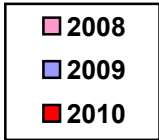
CST - English/Language Arts
 Subgroups* - By Special Needs and Grade
 Percent Proficient and Advanced Levels**
 2008-2010



*Subgroups less than 11 are not reported.
 **Basic or lower proficiency levels not available.
 ***N=2010 Number tested

Manhattan Beach Unified

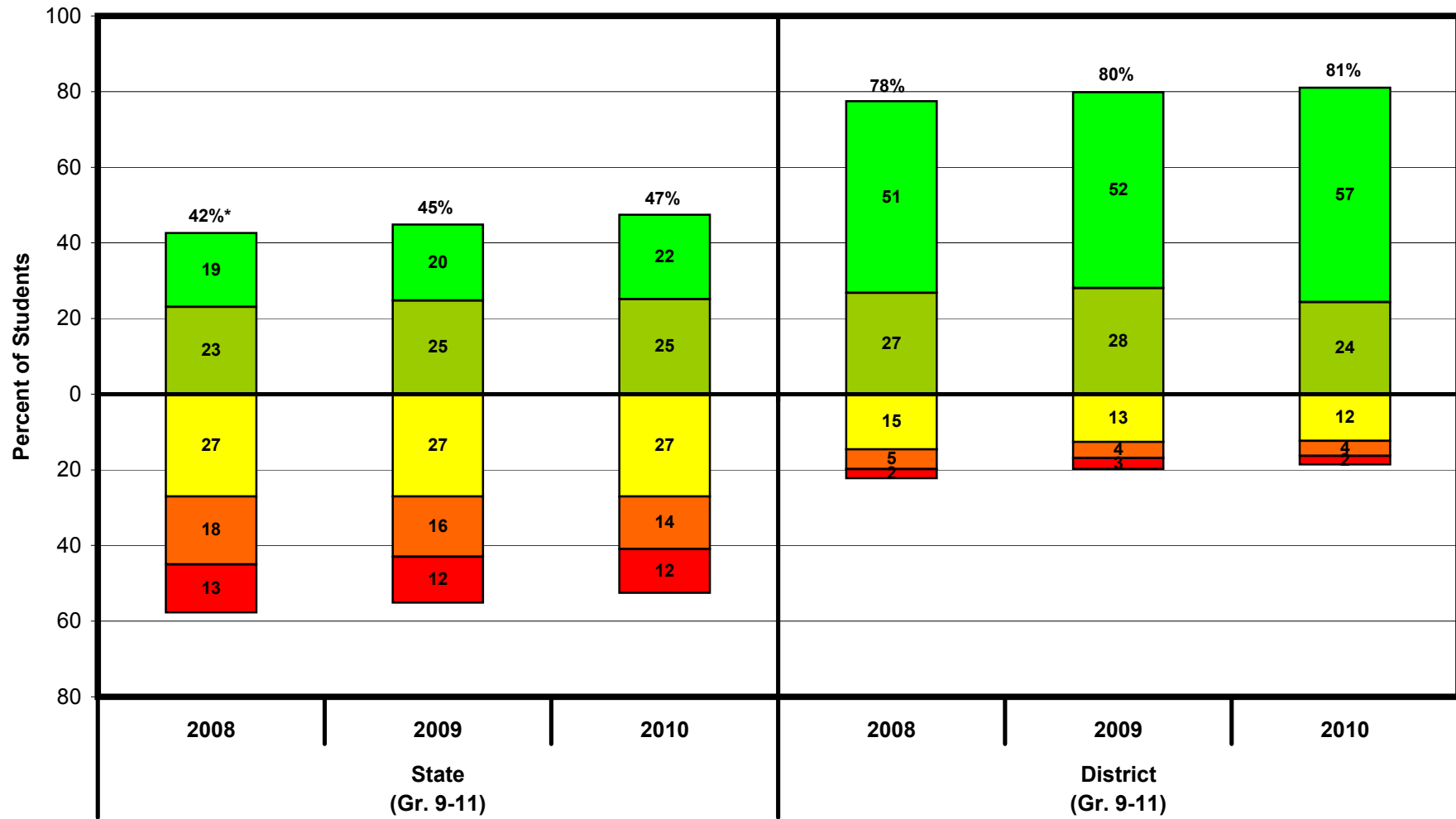
CST - English/Language Arts
 Subgroups* - By Ethnicity and Grade
 Percent Proficient and Advanced Levels**
 2008-2010



*Subgroups less than 11 are not reported
 **Basic or lower proficiency levels not available
 ***N=2010 Number tested

Manhattan Beach Unified

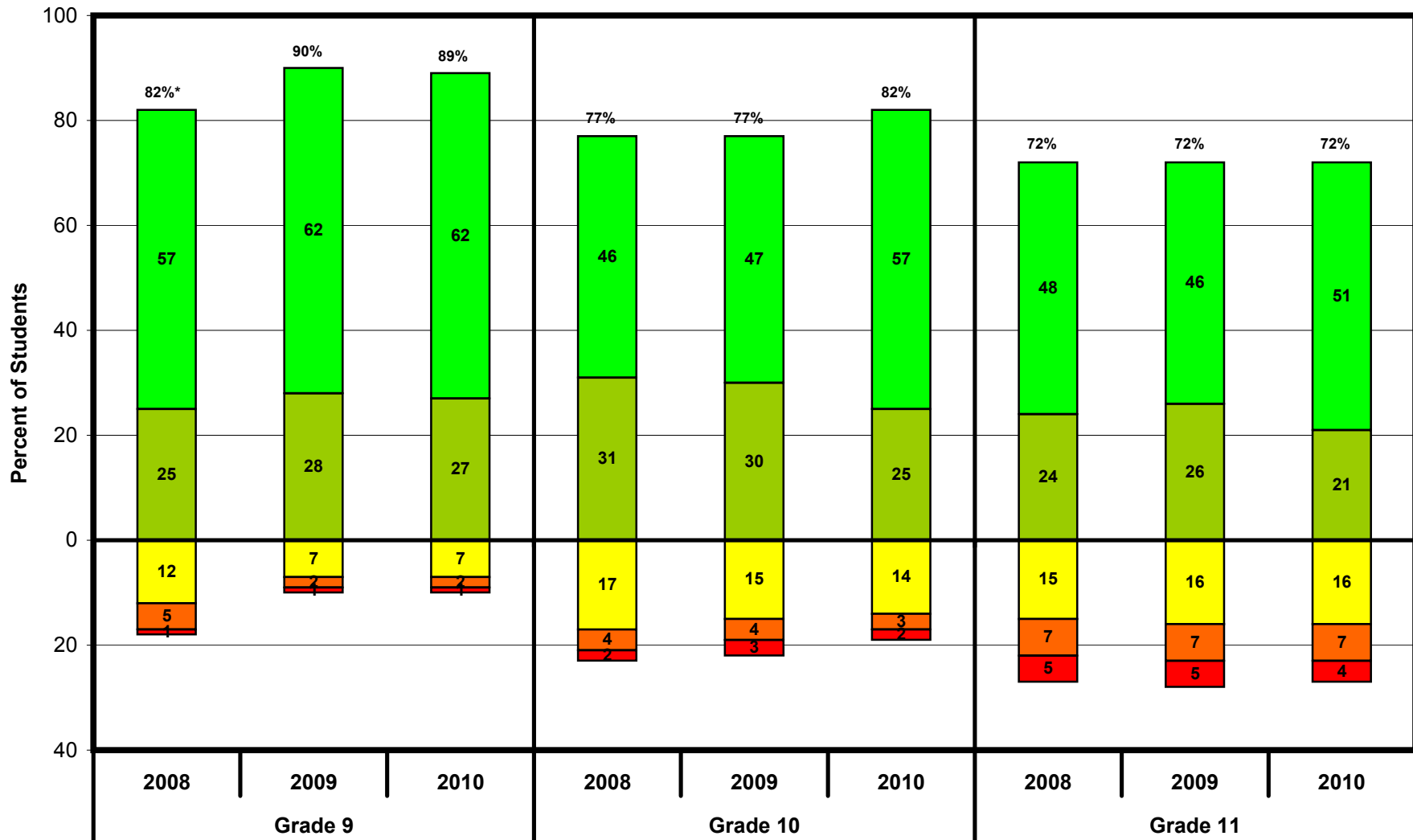
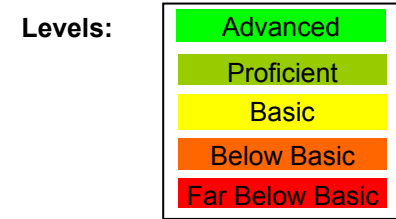
CST - English/Language Arts
 All Students - By State and District
 Percent by Proficiency Levels
 2008-2010



*Percent Proficient or Advanced.

Manhattan Beach Unified

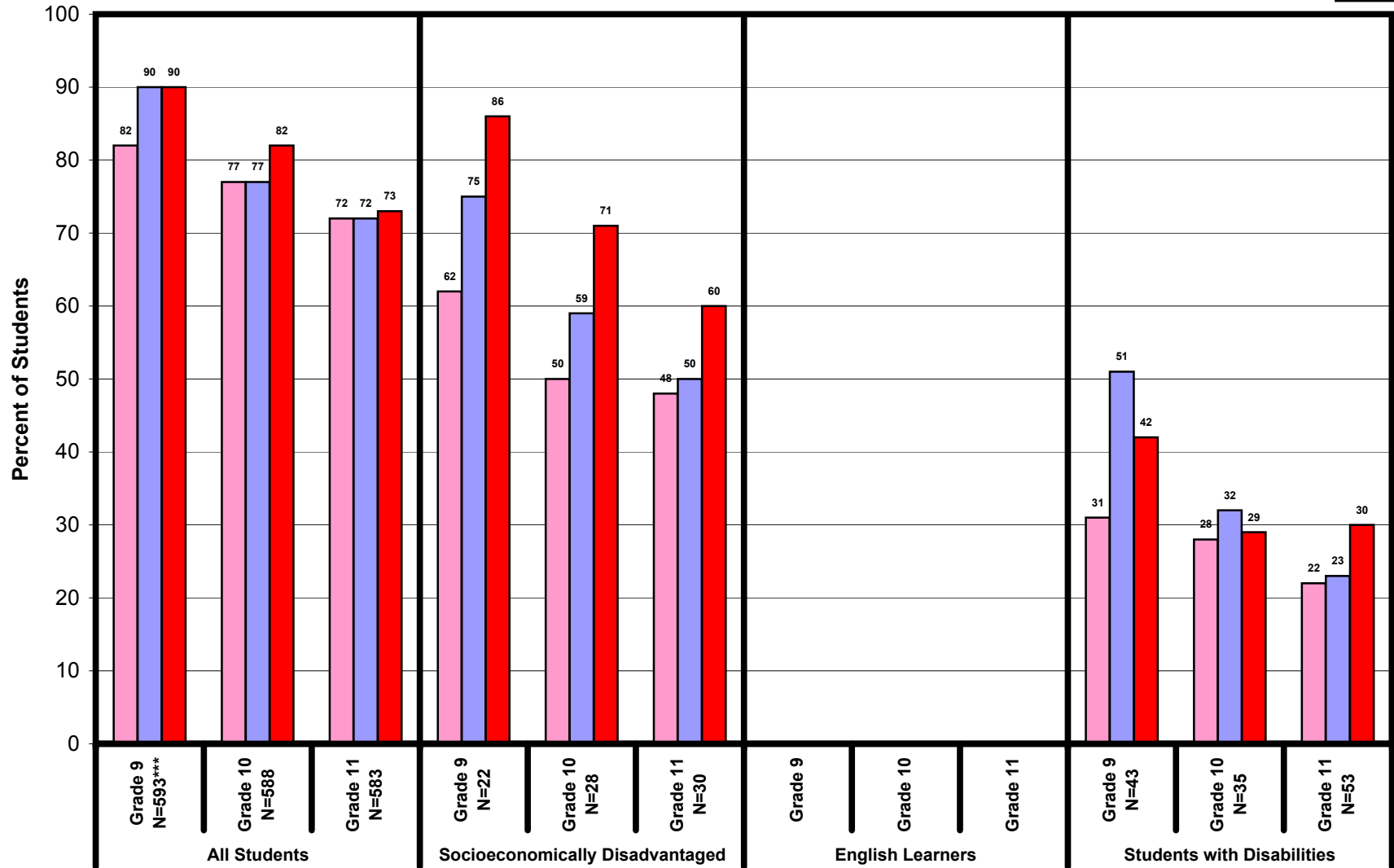
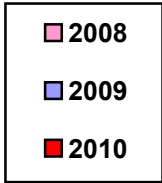
CST - English/Language Arts
All Students - By Grade
Percent by Proficiency Levels
2008-2010



*Percent Proficient or Advanced.

Manhattan Beach Unified

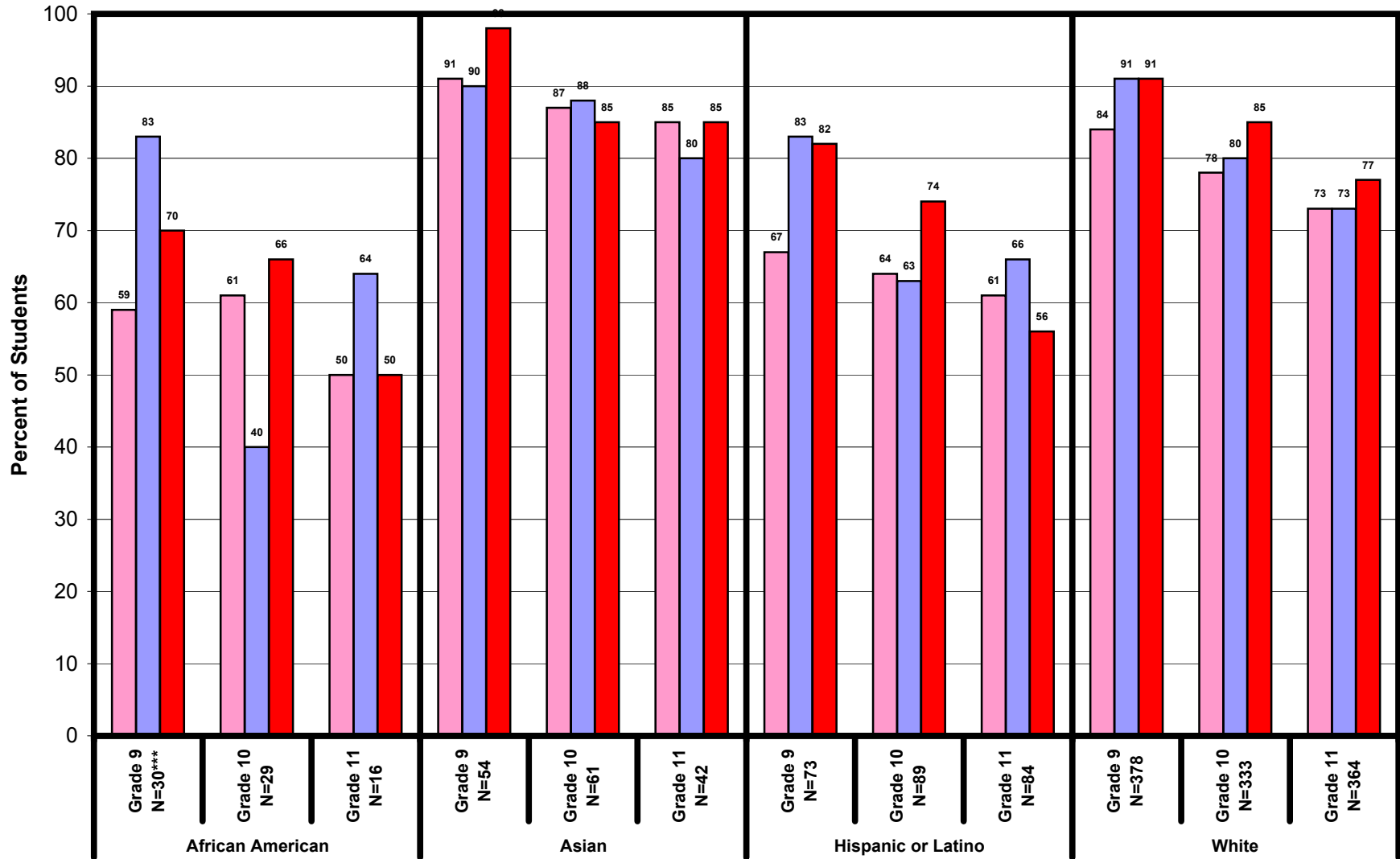
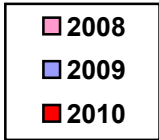
CST - English/Language Arts
 Subgroups* - By Special Needs and Grade
 Percent Proficient and Advanced Levels**
 2008-2010



*Subgroups less than 11 are not reported.
 **Basic or lower proficiency levels not available.
 ***N=2010 Number tested

Manhattan Beach Unified

CST - English/Language Arts
 Subgroups* - By Ethnicity and Grade
 Percent Proficient and Advanced Levels**
 2008-2010



*Subgroups less than 11 are not reported
 **Basic or lower proficiency levels not available
 ***N=2010 Number tested